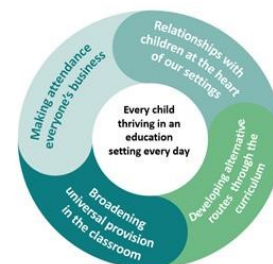


EDUCATION & LEARNING

REPORT OF THE DCC EDUCATION AND LEARNING SERVICE JUNE 2023



Recommended: that the report be noted.

1. Key Performance Indicators for attendance, exclusions, EHE and CME

Attendance

	2021/22 – Autumn/Spring Terms Combined*	2022/23 – Autumn/Spring (Data until 09/03/2023)**	2022/23 - Autumn/Spring (Data until 26/05/2023)***
Total	91.4% Attendance	92.3% Attendance	92.1% Attendance
	7.1% Authorised Absence	5.9% Authorised Absence	5.7% Authorised Absence
	1.5% Unauthorised Absence	1.8% Unauthorised Absence	1.9% Unauthorised Absence
	26.8% Persistent Absence	22.0% Persistent Absence	20.4% Persistent Absence
Primary	93.2% Attendance	94.1% Attendance	94.2% Attendance
	6.0% Authorised Absence	5.0% Authorised Absence	4.8% Authorised Absence
	0.8% Unauthorised Absence	0.9% Unauthorised Absence	1.0% Unauthorised Absence
	20.2% Persistent Absence	17.0% Persistent Absence	14.7% Persistent Absence
Secondary/AllThrough	89.6% Attendance	89.7% Attendance	89.6% Attendance
	8.3% Authorised Absence	7.2% Authorised Absence	7.0% Authorised Absence
	2.3% Unauthorised Absence	3.1% Unauthorised Absence	3.4% Unauthorised Absence
	34.7% Persistent Absence	29.0% Persistent Absence	28.7% Persistent Absence
SEN (E+ K Combined)	87.1% Attendance	88.2% Attendance	88.1% Attendance
	10.4% Authorised Absence	8.4% Authorised Absence	8.2% Authorised Absence
	2.5% Unauthorised Absence	3.5% Unauthorised Absence	3.7% Unauthorised Absence
	40.8% Persistent Absence	34.0% Persistent Absence	33.2% Persistent Absence

SEN Support (K)	DfE Data Not Available	88.7% Attendance	88.8% Attendance
		8.0% Authorised Absence	7.7% Authorised Absence
		3.2% Unauthorised Absence	3.6% Unauthorised Absence
		33.0% Persistent Absence	32.2% Persistent Absence
SEN (E)	DfE Data Not Available	85.6% Attendance	85.3% Attendance
		10.5% Authorised Absence	10.4% Authorised Absence
		3.9% Unauthorised Absence	4.3% Unauthorised Absence
		37.0% Persistent Absence	37.5% Persistent Absence
FSM	87.5% Attendance	87.3% Attendance	87.4% Attendance
	9.1% Authorised Absence	8.5% Authorised Absence	8.2% Authorised Absence
	3.4% Unauthorised Absence	4.2% Unauthorised Absence	4.5% Unauthorised Absence
	43.8% Persistent Absence	41.0% Persistent Absence	40.4% Persistent Absence
CiN	DfE Data Not Available	79.4% Attendance	78.6% Attendance
		11.7% Authorised Absence	11.5% Authorised Absence
		9.0% Unauthorised Absence	9.9% Unauthorised Absence
		52.9% Persistent Absence	55.2% Persistent Absence
CP	DfE Data Not Available	76.2% Attendance	76.3% Attendance
		11.9% Authorised Absence	11.4% Authorised Absence
		11.9% Unauthorised Absence	12.3% Unauthorised Absence
		62.0% Persistent Absence	61.9% Persistent Absence
LAC	DfE Data Not Available	85.4% Attendance	85.4% Attendance
		9.3% Authorised Absence	9.4% Authorised Absence
		5.3% Unauthorised Absence	5.2% Unauthorised Absence
		36.4% Persistent Absence	36.9% Persistent Absence
Male	91.3% Attendance	92.4% Attendance	92.6% Attendance
	6.9% Authorised Absence	5.8% Authorised Absence	5.6% Authorised Absence
	1.4% Unauthorised Absence	1.7% Unauthorised Absence	1.9% Unauthorised Absence
	26.0% Persistent Absence	21.0% Persistent Absence	19.8% Persistent Absence
Female	91.3% Attendance	92.2% Attendance	92.2% Attendance
	7.2% Authorised Absence	6.0% Authorised Absence	5.8% Authorised Absence
	1.5% Unauthorised Absence	1.8% Unauthorised Absence	2.0% Unauthorised Absence
	27.6% Persistent Absence	22.0% Persistent Absence	21.0% Persistent Absence

* Data Source - DfE (<https://explore-education-statistics.service.gov.uk/data-tables>)

** Data Source (Devon County Council Local Data supplied from Devon Schools)

Exclusions

Permanent Exclusions*

	2021/22 – Autumn/Spring Terms Combined	2022/23 – Autumn/Spring (Data until 09/03/2023)	2022/23 – Autumn/Spring (Data until 26/05/2023)*	% of total cohort
Total	95	125	150	
Primary	18	13	20	13.3%
Secondary	77	112	130	86.7%
SEN (E+ K Combined)	72	100	121	80.1%
SEN Support (K)	64	83	92	61.3%
SEN (E)	8	17	29	19.3%
CIN	-	46	50	33.3%
CP	-	4	5	3.3%
LAC	-	3	3	2%
Male	63	86	104	69.3%
Female	32	39	46	30.1%

* Data Source (Devon County Council Local Data supplied from Devon Schools)

Exclusions

Suspensions

	2021/22 – Autumn/Spring Terms Combined*	2022/23 – Autumn/Spring (Data until 09/03/2023)*	2022/23 – Autumn/Spring (Data until 26/05/2023)*	% of total cohort
Total	2496	3060	3873	
Primary	320	320	435	11.2%
Secondary	2176	2740	3438	88.8%
SEN (E+ K Combined)	1266	1658	2072	53.4%
SEN Support (K)	911	1258	1556	40.1%
SEN (E)	355	400	516	13.3%
CIN	-	541	584	15%
CP	-	91	94	2.4%
LAC	-	64	68	1.75%
Male	1612	1958	2459	63.4%
Female	884	1102	1414	36.5%

* Data Source (Devon County Council Local Data supplied from Devon Schools), numbers as distinct students

Elective Home Education (EHE)

	Numbers as 10 th March 2022	Numbers as 10 th March 2023	Numbers as 26 th May 2023	% of total cohort
Total	1752	2001	2214	
Primary	725	695	750	33.9%
Secondary	1027	1306	1464	66.1%
SEN (E+ K Combined)	614	706	889	40.1%
SEN Support (K)	476	539	614	27.7%
SEN (E)	138	167	175	7.1%
CIN	4	11	17	0.7%
CP	6	13	11	0.5%
LAC	1	0	0	0%
Male	847	959	1069	48.2%
Female	905	1042	1145	51.2%

Children Missing Education (CME)

	Numbers as 10 th March 2022	Numbers as 10 th March 2023	Numbers as 26 th May 2023	% of total cohort
Total	61	90	99	
Primary	21	20	30	30.3%
Secondary	40	70	69	69.7%
SEN (E+ K Combined)	30	49	49	49.4%
SEN Support (K)	15	22	27	27.2%
SEN (E)	15	27	22	22.2%
Male	34	50	53	53.5%
Female	27	40	46	46.4%
CIN	2	7	5	5.1%
CP	3	3	5	5.1%
LAC	3	4	4	4%

- 1.1** We have seen a slight increase in attendance as the year has progressed but absence rates remain high, particularly in secondary. 1 in 3 children with SEND are persistently absent from school, 40% of FSM and more than 50% of children with safeguarding concerns.
- 1.2** Our exclusion and suspension rate is not really slowing down and we are particularly concerned that within these figures, children with SEND reflect some of the highest % when they are a small cohort in their own right.

1.3 EHE and CME provide us with a similar pattern of concern regarding SEND children indicating that there is still work to be done to ensure the needs of SEND pupils are well met in mainstream education and that the Local Authority has systems and services in place to both support and challenge settings.

1.4 As the number of children with additional needs continues to grow both locally and nationally, we will need to ensure that more children with additional needs can be well educated within mainstream settings. The Local Authority are currently reviewing their services to ensure they are best placed to meet the need of vulnerable children.

2. Alternative Provision

2.1 The LA currently commission 280 alternative provision places and there are 264 children accessing these.

	Year 11	Year 10	Year 9	Year 8	Year 3	Total
Number of pupils	123	70	45	29	8	292

2.2 We have seen the most significant increase in medical requests and in addition to our commissioned places, we also provide education for many other children through bespoke Education Other Than At School (EOTAS) packages. In line with the agreement from DEF, we are now ensuring the AWPU funding for the child follows them and this is being used towards the cost of an EOTAS package whilst the child remains on the school roll. As soon as the child returns to school, the funding will follow the child back into the setting.

Children receiving EOTAS packages

	Total	EHCP	VSR	Male	Female
Number of pupils	263	98	16	157	107

Number of pupils receiving EOTAS by year group			
Year 11	60	Year 6	11
Year 10	54	Year 5	13
Year 9	50	Year 4	8
Year 8	34	Year 3	4
Year 7	24	Year 2	1
		Year 1	3
		Year R	2

3. Ofsted

3.1 We have had 142 Ofsted complaints since Sept 2022 of which 46 are currently open and being investigated. The concerns mainly relate to bullying, safeguarding and leadership. The LA investigates all Ofsted complaints. Depending on the nature of the complaint, this may include visits to the school, scrutiny of paperwork, policies and processes. Where an investigation has already been conducted by the school, we may choose to use this as our evidence based to avoid the school having to repeat a process that has already been done. The number of complaints has continued to increase, and this is having a significant impact on our services. We currently use our safeguarding, early years, school effectiveness, SEND and SEMH teams to support with investigating complaints. On top of the Ofsted complaints, we also receive letters from the

ESFA/DFE where they may have concerns about a setting and are seeking assurances from the LA. We also receive numerous complaints direct from families and a large majority of these are about the quality of SEND provision or the lack of access to a suitable education.

3.2 Ofsted outcomes (published)

Date	Secondary School				Primary School			
	O	G	RI	I	O	G	RI	I
Sept 22 – Mar 23	1	3	2	0	1	35	4	0
Sept 22 – May 23	1	7	2	1	1	67	10	0
Current Judgements for all Devon Schools	4	27	5	3	23	242	29	3
Devon %	10.3	69.2	12.8	7.7	7.7	81.5	9.8	1
National %	14.3	66.5	13.2	5.9	10.6	78.6	8.5	2.2

4. Staffing changes

At the end of August, Jen Norris (Head of Safeguarding and Vulnerable Pupils), Marc Kastner (Head of Inclusion) and Jane Williams (Head of the Educational Psychology service) will be leaving DCC. These staff are experienced senior officers who will be missed when they leave us. However, we will not necessarily be appointing like for like replacements for their roles and are currently reviewing our service delivery model with an aim to start transitioning to this from September 2023.

- 4.1 The permanent Director of Education recruitment will take place in September when the new DCS starts their role.

5. SEND Conference

We were delighted to have over 180 bookings for the SEND conference and it was a privilege to be able to open the conference and see the dedication and commitment from the staff in attendance. We were also grateful to Rachael Sharpe who spoke to the conference about a partnership approach in her schools to supporting children with SEND. We are keen to get many more schools to share their work with us so we can build up a range of case studies.

6. SEMH Partnership Project

We asked schools to submit their bids for the SEMH partnership project by half term. We have had 25 bids and these will be considered by a funding panel involving the CEO, Strategic lead for SEND and Headteacher representatives. Every partnership will be required to submit a termly evaluation of the impact of their work and cost analysis. We will also report to the High Needs Funding Committee and Safety Valve committee twice a year on the progress of the projects. At the end of the year, each partnership will need to produce a case study and we will share these with all schools.

7. School Effectiveness

The team continue to work to support schools across Devon.

Additionally, DCC has now established good relationships with the Department for Education with regard to support for schools qualifying for Trust School Improvement support. Eligibility is as follows. Single schools can get support if your school receives an Ofsted 'requires improvement' judgement during the 2022 to 2023 academic year. This applies to:

- local authority-maintained schools
- single academy trusts (SATs)
- multi-academy trusts (MATs) with only one school

Trusts with multiple schools can get support if it contains at least 2 schools that have been part of the trust for 3 years or more, and it meets either of the following criteria:

- there has been an overall decline in Ofsted judgements for schools within the trust, taking in account the schools' most recent inspection since joining your trust
- at least 50% of the schools have a current Ofsted 'requires improvement' judgement or worse, which they have received since joining the trust

The ratings for both current and previous Ofsted inspections are based on the [Ofsted management information](#) which is published monthly.

The team continues to work with governors and have escalated concerns where necessary.

Regular meetings continue to take place with the Diocese in order to ensure schools receive support.

The team are working on the offer for next academic year. A survey will be going to heads with the following introduction and questions:

Across the country the local authority role has become more strategic and schools are increasingly expected to take responsibility for their own improvement and to help other schools that are struggling. The current statutory obligations for a county council regarding school improvement work are minimal. A local authority should identify maintained schools causing concern and use powers of intervention accordingly. The statutory duties around school effectiveness remain. In order to help us to plan for post April 2024 we would like you to answer the following questions:

1. Do you currently use the Devon CC school effectiveness team?
2. If yes
 - a. What features of the school effectiveness would you buy into if this service were available from April 2024?
 - b. How much per pupil would you be prepared to pay for a school improvement service?
3. If no, if you do not intend to use DCC school effectiveness where would you access this service?

Rachel Shaw

Interim Head of Education (Delivery)

June 2023

Matthew Shanks

Interim Head of Education (Strategy)